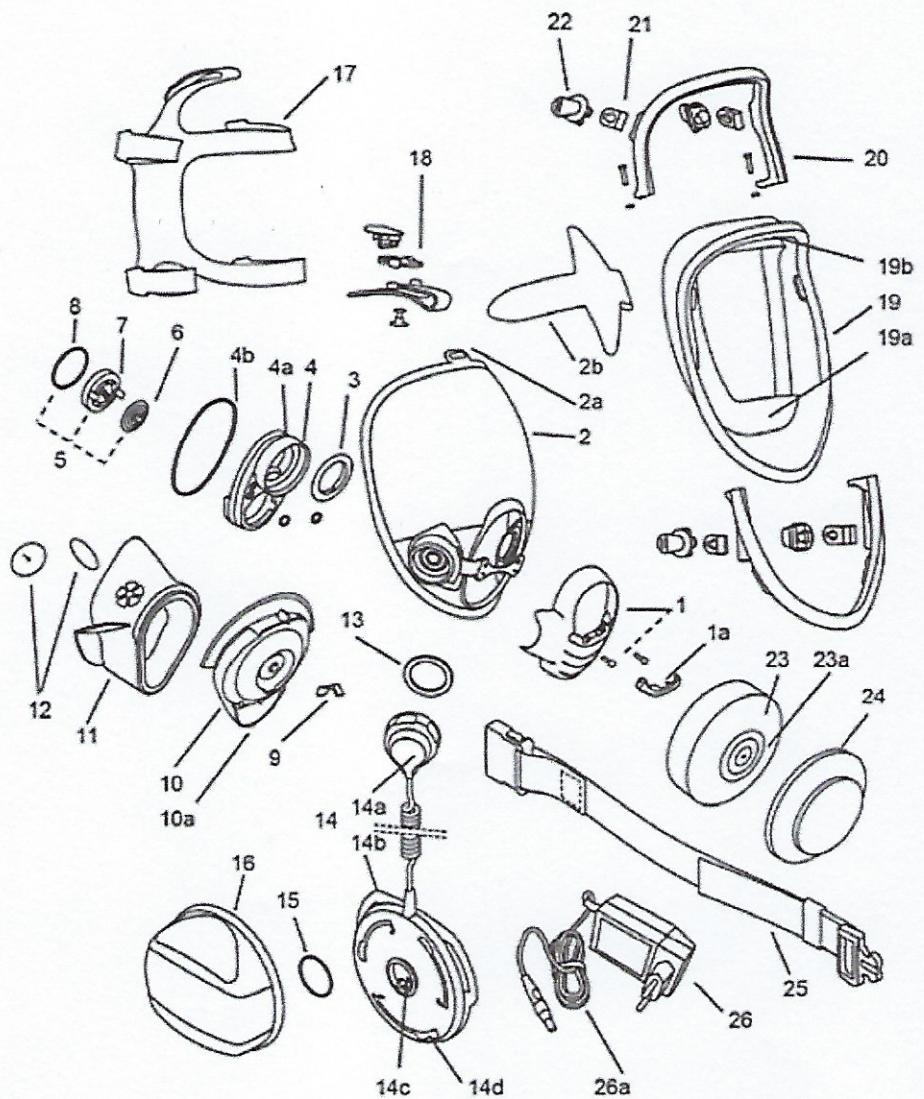


Key		
1	2018799	Front Cover and Screws
1a	---	Screw Cover
2	2018800	Visor and Side Fittings
2a	---	Tab
2b	---	Visorguard
3	2018789	Filter Gasket
4	2018802	Front Port and Mini-rings
4a	---	Hook
4b	2001315	O-Ring for Front Port
5	1032103	Exhalation Valve Complete Assembly
6	1031824	Exhalation Valve Flap
7	---	Exhalation Valve Frame
8	1027929	O-Ring for Exhalation Valve
9	2018788	Clip
10	2019951	Blower Unit
10a	---	Nail
11	2001326	Inner Mask and Valves (S)&(M)
	2001325	Inner Mask and Valves (ML)
12	2018801	Inhalation Valve Flap
13	2019959	Cable Connector Gasket
14	2019950	Cable Assembly
14a	---	Cable Connector
14b	---	Belt plate
14c	---	Battery socket
14d	---	Slot for the Lug
15	2019958	O-Ring for Belt Plate
16	2018741	Battery
17	2001311	Head Harness (Web)
	1033400	Head Harness (Polymet) (accessory)
18	2001313	Stirrup, Rubber Link and Top Mount
19	1033101	Faceseal (M)&(ML)
	1074391	Faceseal (S)
19a	---	Chin Cup
19b	---	Slot
20	2009513	Clamp, Screws and Nuts for (S)
	2009512	Clamp, Screws and Nuts for (M)
	2001310	Clamp, Screws and Nuts for (ML)
21	2001315	Mask Hinge Set
22	1033122	Buckles and Rollers
23	5552870	PF251/2: TH1/TH2 / TH3 / TM2 / TM3 PSL filter
23a	---	Filter inlet
24	5052693	Blanking Cover for Filter
25	2015430	Waistbelt
26	2018638	Charger (Eur 2-pin & UK 3-pin Plug)
26a	---	Charger lead
-	5552694	Filter shower cover
-	2001330	Neckstrap (accessory)
-	2003441	O-Ring Tool
-	2019113	Carballo Grease
-	2011081	Anti-Mist Sachet
-	2008247	Distel cleansing/disinfecting solutions



PHANTOM VISION