

# DIAGNOSIS MANUAL SAMPLING

## Instruction

Gels : EGP200DIAG / EGP310DIAG / EGP500DIAG / EGP1IMP

### Equipment required

- Decontaminable sampling tools: cutter, chisel, riffle, spatula
- EGP Diagnostic gel
- EGP Impregnation sprayer
- Sampling bags
- Wipes (Ref. LIEGP100)
- Waste bags

### Implementation

#### On non-porous materials:

- Apply a small amount of EGP Diagnostic gel to the surface to be sampled (floor, wall or ceiling).
- Spread in a 10mm layer over the area.
- Spray EGP1IMP gel on the object over a radius of 10 centimeters.
- Proceed with sampling under gel: the tool must always work immersed in the gel, if necessary, refill with gel.
- Bag the sample taken.
- Clean the removed surface with wipes (Ref. LIEGP100).
- Clean the tools and the working area.
- Soiled wipes must be disposed of, in accordance with regulations, in an asbestos waste bag.

#### On porous materials:

- Spray the gel on the surface to be sampled, going beyond the area.
- Proceed to the sampling under gel: The tool must always work immersed in the gel, if necessary, refill with gel.
- Bag the sample.
- Clean the tools and the working area (Ref. LIEGP100).
- The soiled wipes must be evacuated, in accordance with the regulations, in a bag for asbestos waste.

EASYGEL<sup>®</sup>  
PROTECT

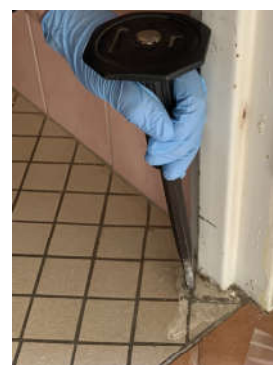
Anti-dust solutions



Asbestos

Lead

Silica



# EASYGEL<sup>®</sup> PROTECT

## Anti-dust solutions

### Product illustrations



Gel in 200ml bottle  
EGP310DIAG



310ml gel in cartridge  
EGP310DIAG



Gel in 500ml bag  
EGP500DIAG



Impregnation gel in 1L bottle  
EGP1IMP

### Recommendations

|                 |  |
|-----------------|--|
| Zone marking    | All our references exist in colored version (Reference followed by the letter B) |
| Sample analysis | Our gels do not interfere with the results                                       |

### Legal and technical information

- Our solutions for the capture and retention of fine and ultra-fine particles at source must be used in accordance with their instructions for use and the procedure written by the company.

### Contact

- BCL INVENT  
2, Rue Napoléon  
57370 SAINT JEAN KOURTZERODE  
FRANCE  
Tél : +33(0)3 87 07 36 41  
info@bclinvent.com

All our products are manufactured in the Grand Est. Our Research & Development team develops our gels, designs and validates the various processes and tools. Our manufacturing unit ensures production under the control of our quality department.

For more information  
+33(0) 3 87 07 36 41 - [www.easygelprotectbtp.com](http://www.easygelprotectbtp.com)

Easygel Protect<sup>®</sup>, an innovation patented by BCL Invent